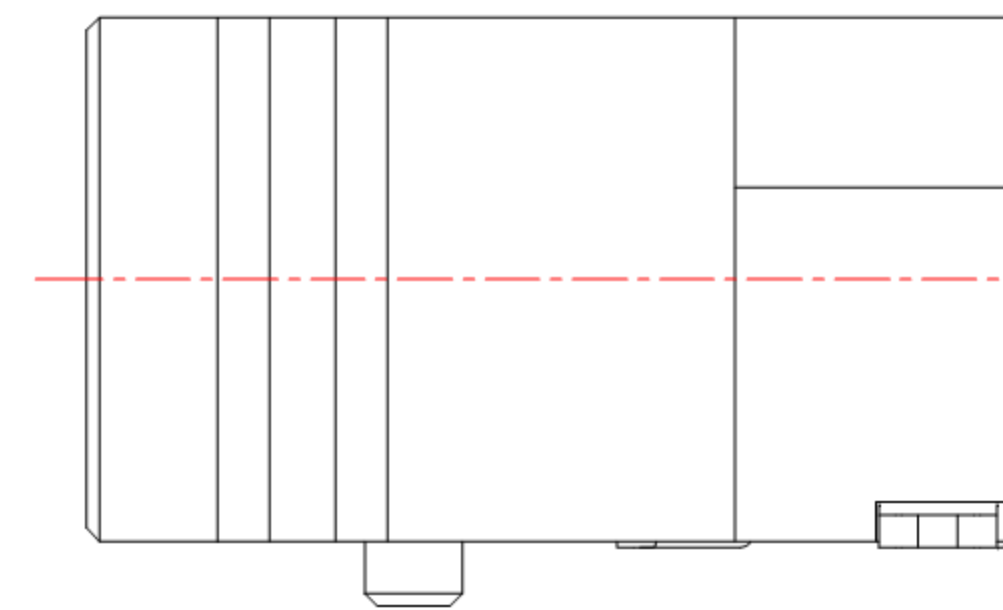
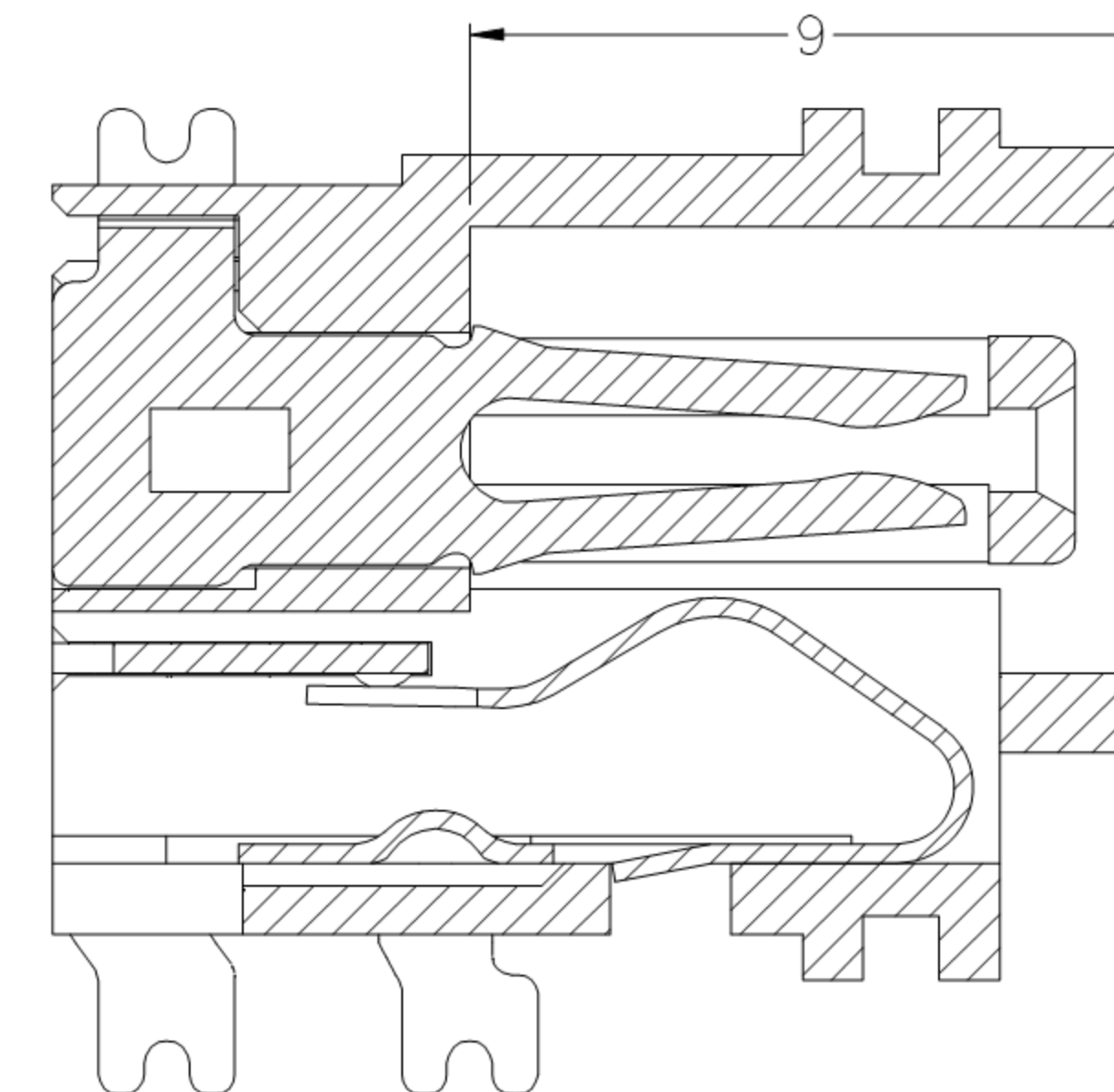


2.60(2X)
0.80(2X) 1.00(2X)

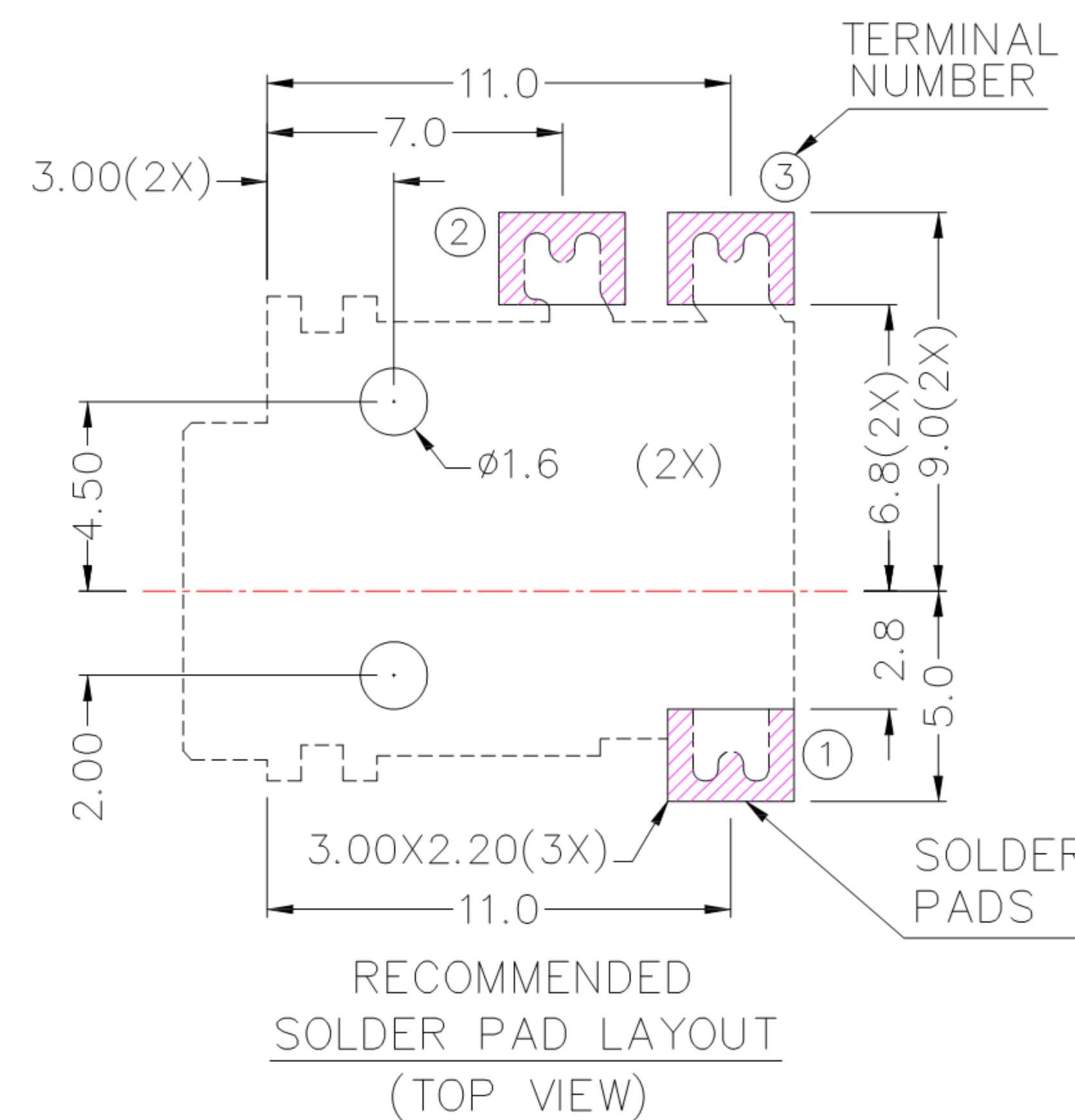
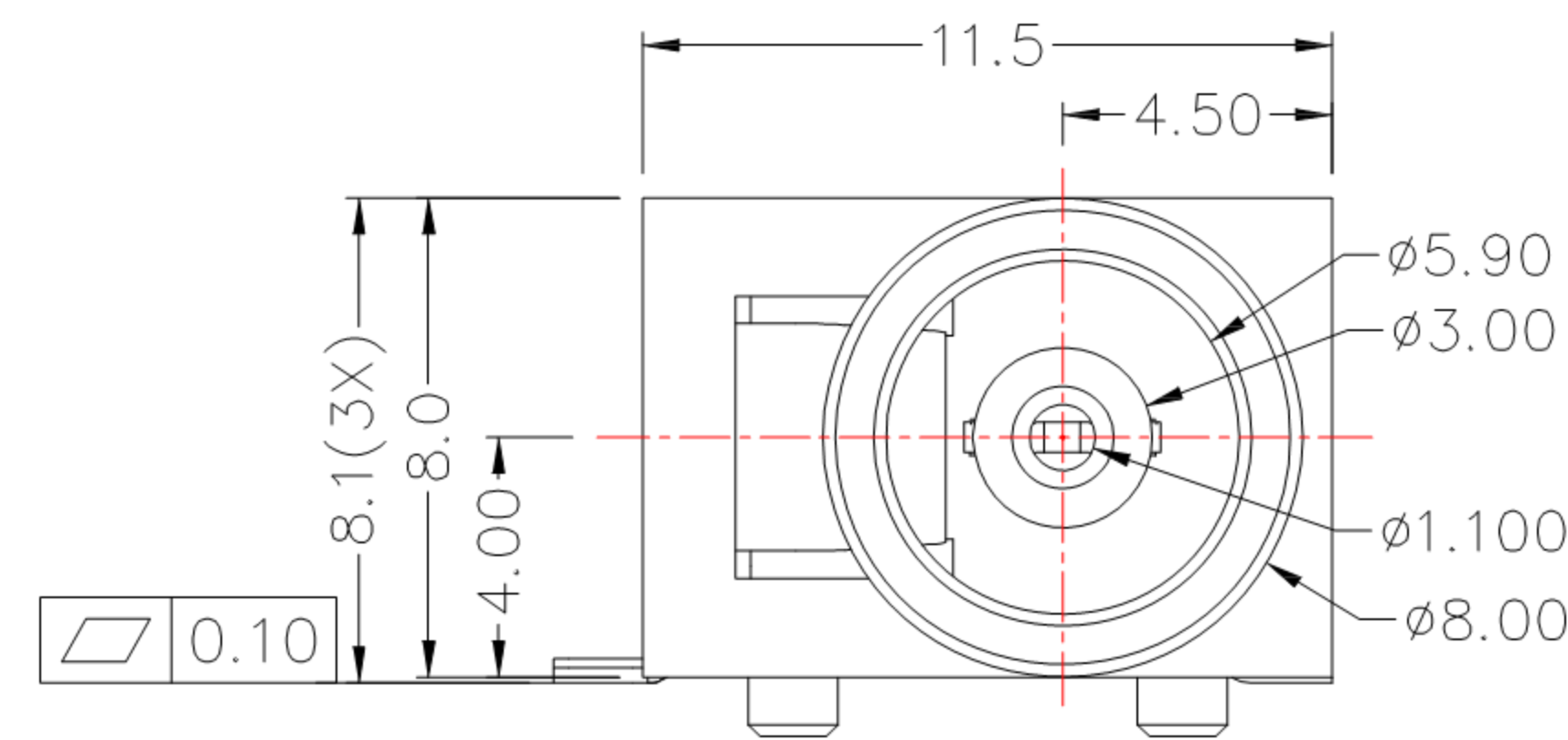


MODEL NO.	DC-076D
SCHEMATIC	



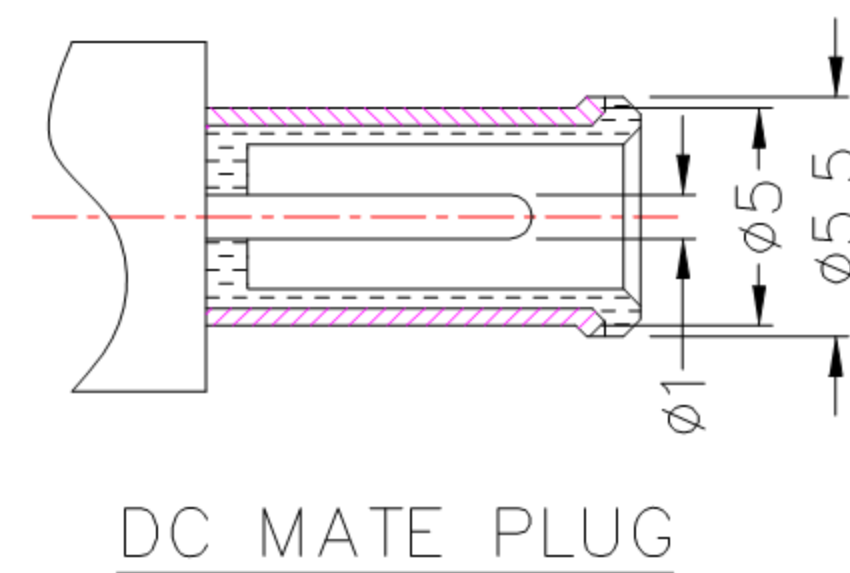
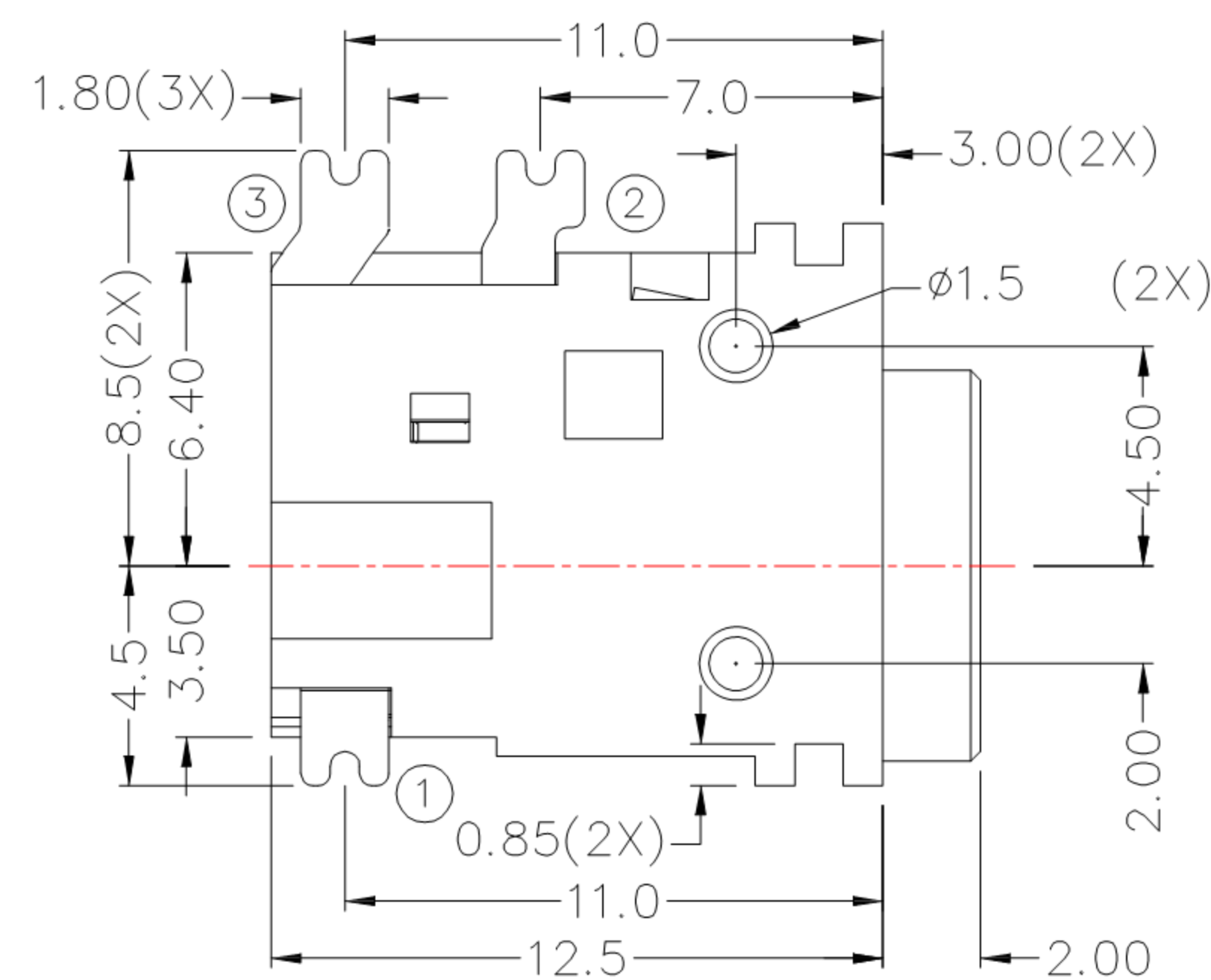
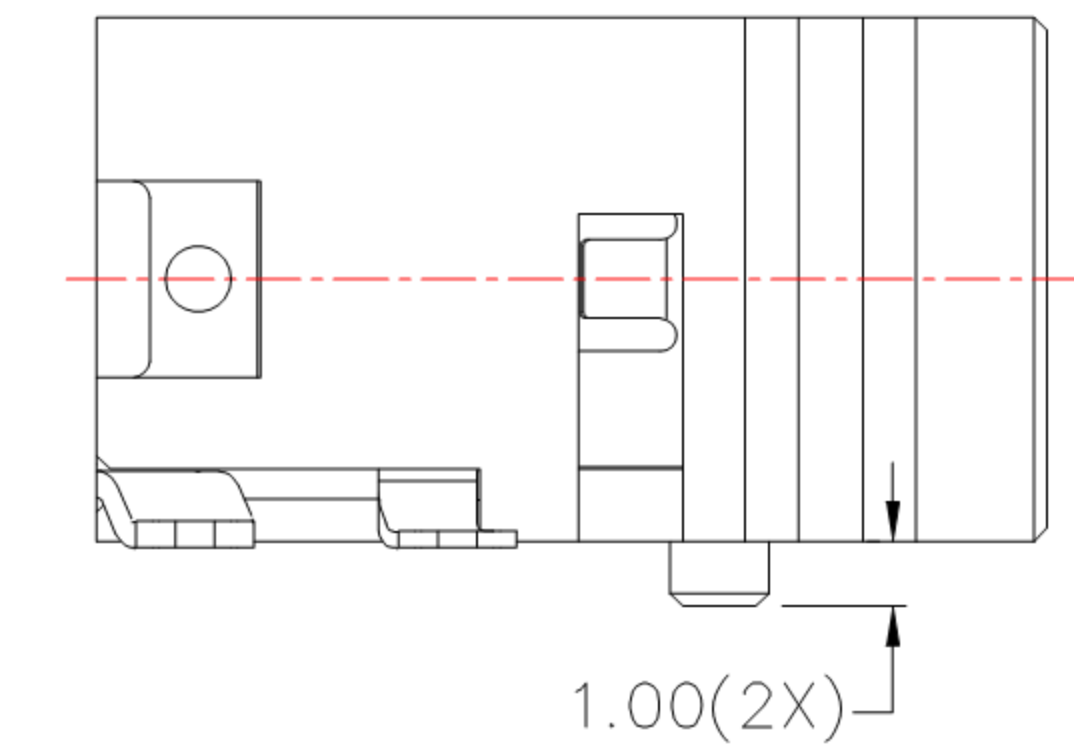
SPECIFICATION

1. Rating : DC 24V 3.0A
2. Contact resistance : $\leq 50m\Omega$
3. Insulation resistance : $\geq 100M\Omega$
4. Withstand voltage : 500VAC
5. Insertion and extraction force : 3-30N
6. life test : 5,000 cycles



*** MATERIAL**

- TERMINAL 1 : BRASS
- TERMINAL 2 : PHOSPHOR BRONZE
- TERMINAL 3 : BRASS
- HOUSING : PA6T



2	新增剖视图	Jack	112219
1	新增SPEC	Jack	081214
ITEM NO.	DESCRIPTION	DRAWN	DATE

东莞市高迪电子有限公司
 Dong Guan KDRR Electronic Switch Jack Co., Ltd.

TOLERANCE UNLESS OTHERWISE STATED:	Up to 5 ±0.2	Above 5 ~ 15 ±0.3	Above 15 ~ 30 ±0.4	Above 30 ~ 50 ±0.5	Angle ±0.3
	3RD. ANGEL'S	UNITS	MM		

DRAWN BY:	DATE	MAT'L	TITLE	JACK
Jack Lu	11/22/19		MODLE	DC JACK
CHECKED BY:	DATE	FINISH	DWG NO.	DC-076D
Jacky Chen	11/22/19		PART NO.	DC-076D
APPROVED BY:	DATE	SCALE	1:1	
Tony Kao	11/22/19	SHEET NO.	1 of 1	

SIZE	A4
VER	R2